

4

3

2

1



REVISION DATA				
SYM	REV	DESCRIPTION	DATE	APPR.
	00	new part	19.07.16	JU
	01	new Order Information	26.09.18	MR

technical specification

Current Rating: 2A AC, DC
Voltage Rating: 100V AC,DC
Temperature: -25°C to +85°C
high temperature: -40°C to +105°C
Contact Resistance: 10mΩ
Insulation Resistance: 1000MΩ
Withstanding Voltage: 800V AC/minute
Material Pin: Brass
Material: UL94V-0

Dimension:

- A = (No. of Pos. - 1) x 2.00
- B = A + 6.00
- C = A + 2.72
- D = A + 4.52

D

D

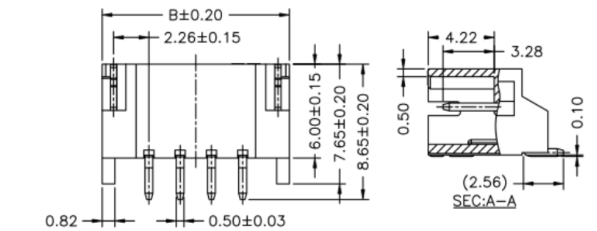
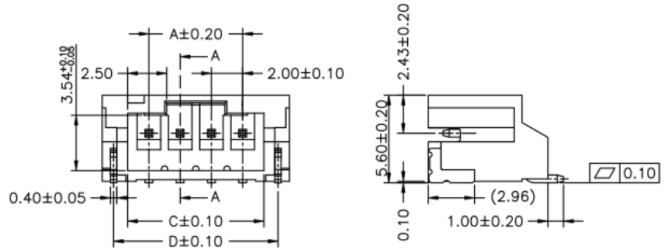
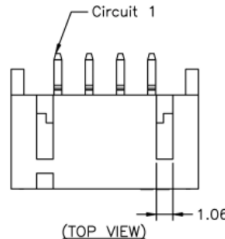
C

C

B

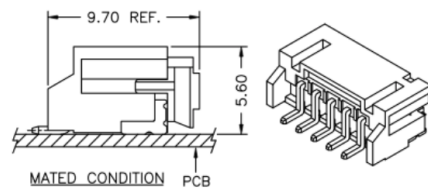
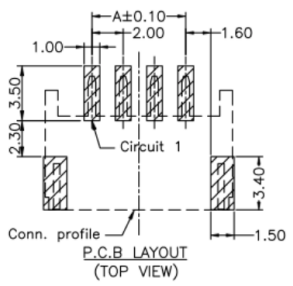
B

A



order information

C200401	xx	xx	xx	xx	xx	xx
No. of Positions	Plating Option	Type	Entry	Packaging	Special Customer	
02~18	01= gold flash 100= tin xx= on request	A1= SMT	B2= side	A= bag D= tape&reel xx= on request	xx= on request	



		Single Row Wafer SMT Type, Side Entry	
TOLERANCE:	PROJECTON		
ANGLE ±5°	DATE	19.07.16	Customer Drawing- No.:
X.XXX ±0.05	DRAWN	MR	Drawing- No.: 2160752
X.XX ±0.15	CHECKED	JU	
X.X ±0.20	APPROVED	JU	
X. ±0.35			UNIT: mm SCALE: SIZE: A4