

4

3

2

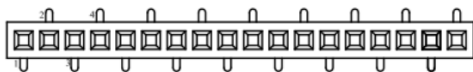
1

RoHS REACH compliant

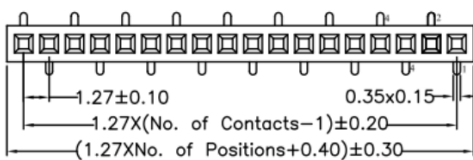
REVISION DATA				
SYM	REV	DESCRIPTION	DATE	APPR.
	00	new part	30.03.17	MR

**Electrical**  
 Current rating: 1Amps/contact max.  
 Contact resistance: ≤ 20mΩ/contact  
 Isolation resistance: ≥ 1000MΩ at V=100V  
 Withstanding Voltage: 300V AC/minute

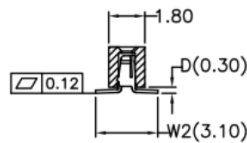
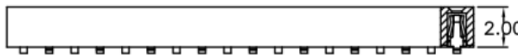
**Material**  
 Contact: Phosphor Bronze  
 Isolator: High Temperature, Thermoplastic UL94V-0  
 Operating temperature: Gold plated: -55°C to +105°C  
 Tin plated: -40°C to +105°C



R1 Type



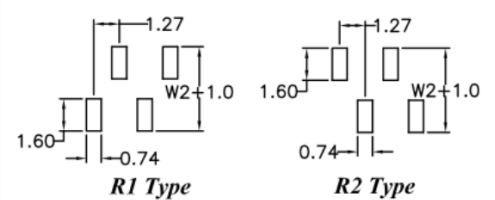
R2 Type



order information

B127151	xx	xx	xx	xx	xx
No. of Positions	Plating Option	R Type	Packaging	Special Customer	
02~40	01= gold flash	R1= R1 Type	F= tape&reel with cap		
	xx= on request	R2= R2 Type	E= tube&cap		
			xx= on request		

Recommended P.C.B Board Layout



R1 Type

R2 Type



Single Row Female Header Straight SMT Type

Tolerance: X. ±0.50 .X ±0.35 .XX ±0.25 .XXX ±0.05 X* ±2*	PROJECTON				
	DATE	30.03.2017	Customer Drawing-No.:		
	DRAWN	MR	Drawing-No.: 2160805		
	CHECKED	BR			
	APPROVED	BR	UNIT: mm	SCALE:	SIZE: A4