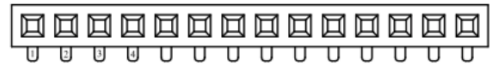


4

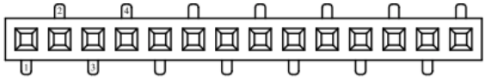
3

2

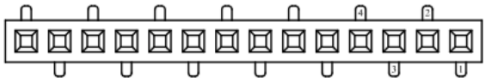
1



R3 Type



R1 Type



R2 Type

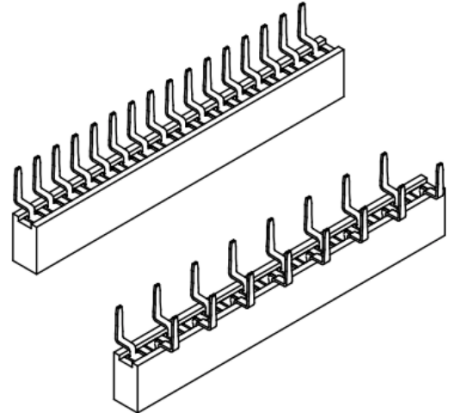
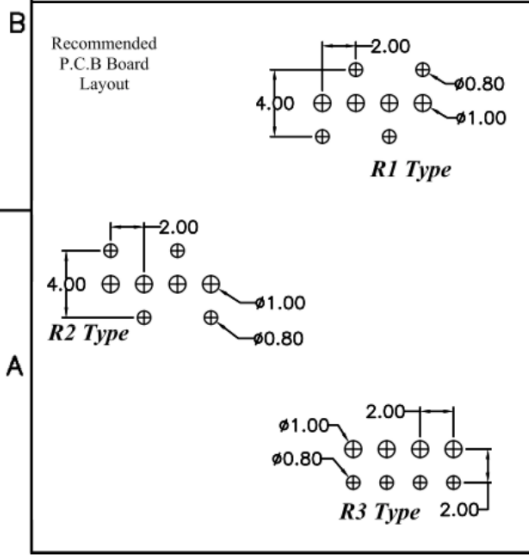
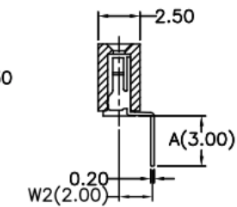
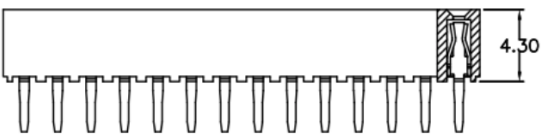
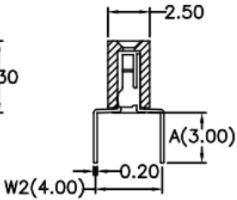
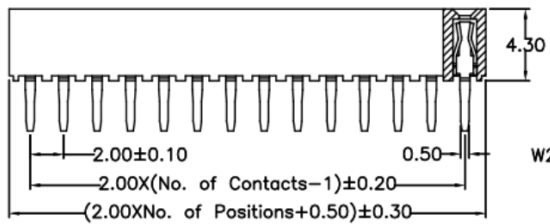
RoHS
REACH
compliant

REVISION DATA				
SYM	REV	DESCRIPTION	DATE	APPR.
	00	new part	22.03.17	MR

Electrical
 Current rating: 1,5Amps/contact max.
 Contact resistance: $\leq 20m\Omega$ /contact
 Isolation resistance: $\geq 1000M\Omega$ at V=100V
 Withstanding Voltage: 450V AC/minute

Material
 Contact: Phosphor Bronze
 Isolator: High Temperature, Thermoplastic UL94V-0

Operating temperature: Tin plated: -40°C to +105°C
 Gold plated: -55°C to +105°C



order information

B200105	xx	xx	xx	xx	xx
No. of Positions	Plating Option	R Type	Packaging	Special Customer	
02~40	01= gold flash xx= on request	R1= R1 Type R2= R2 Type R3= R3 Type	A= bag C= tube xx= on request		

	BRCONNECTORS		Single Row Female Header Bottom Entry		
	PROJECTON		Customer Drawing-No.:		
	DATE	22.03.2017	Drawing-No.: 2160848		
	DRAWN	MR			
	CHECKED	BR			
APPROVED	BR	UNIT:	SCALE:	SIZE:	A4

Diese Zeichnung ist ausdrücklich Eigentum der BR-connectors GmbH. Ohne vorherige Zustimmung seitens der BR-connectors GmbH darf diese nicht vervielfältigt, noch an Dritte zugänglich gemacht werden. Wir behalten uns alle Rechte vor, auch im Falle einer Patentierung nach Gebrauchsmusterprüfung.