

4

3

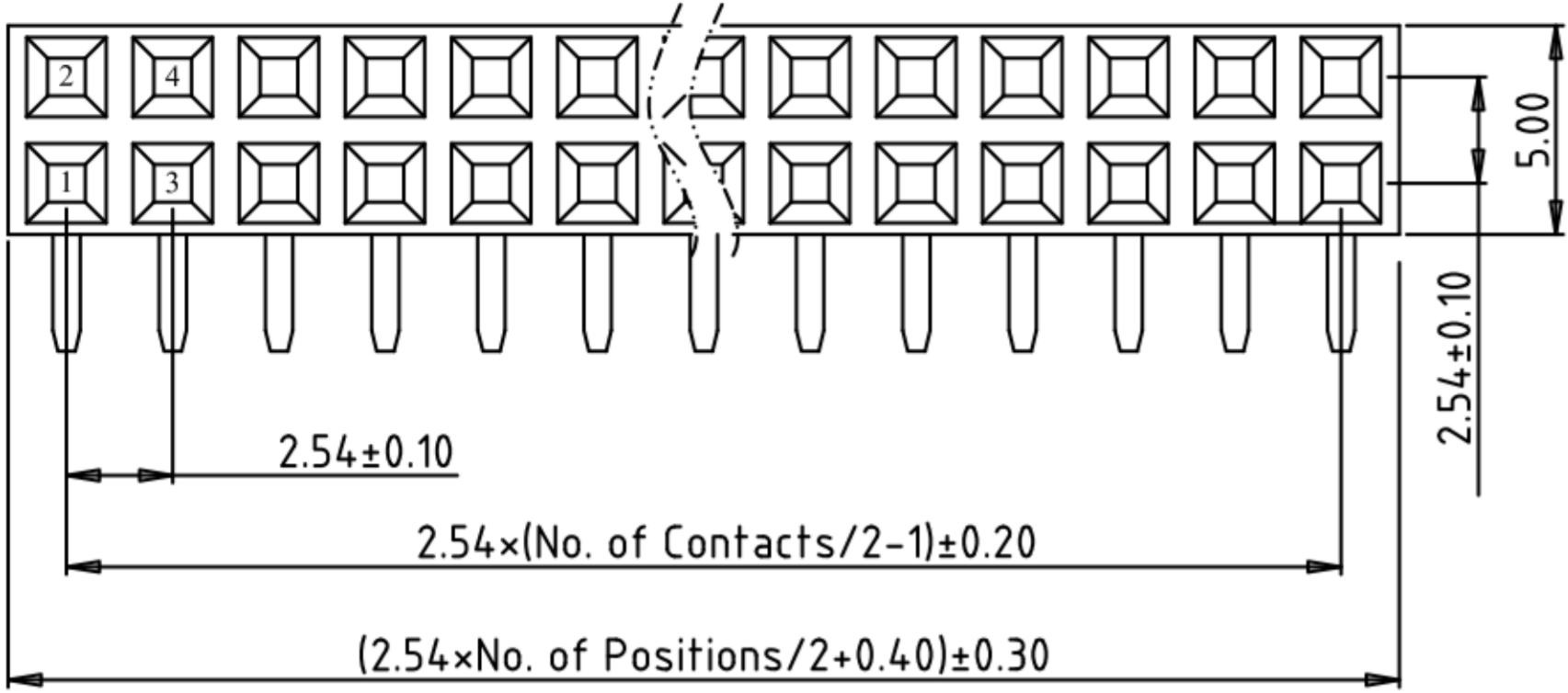
2

1

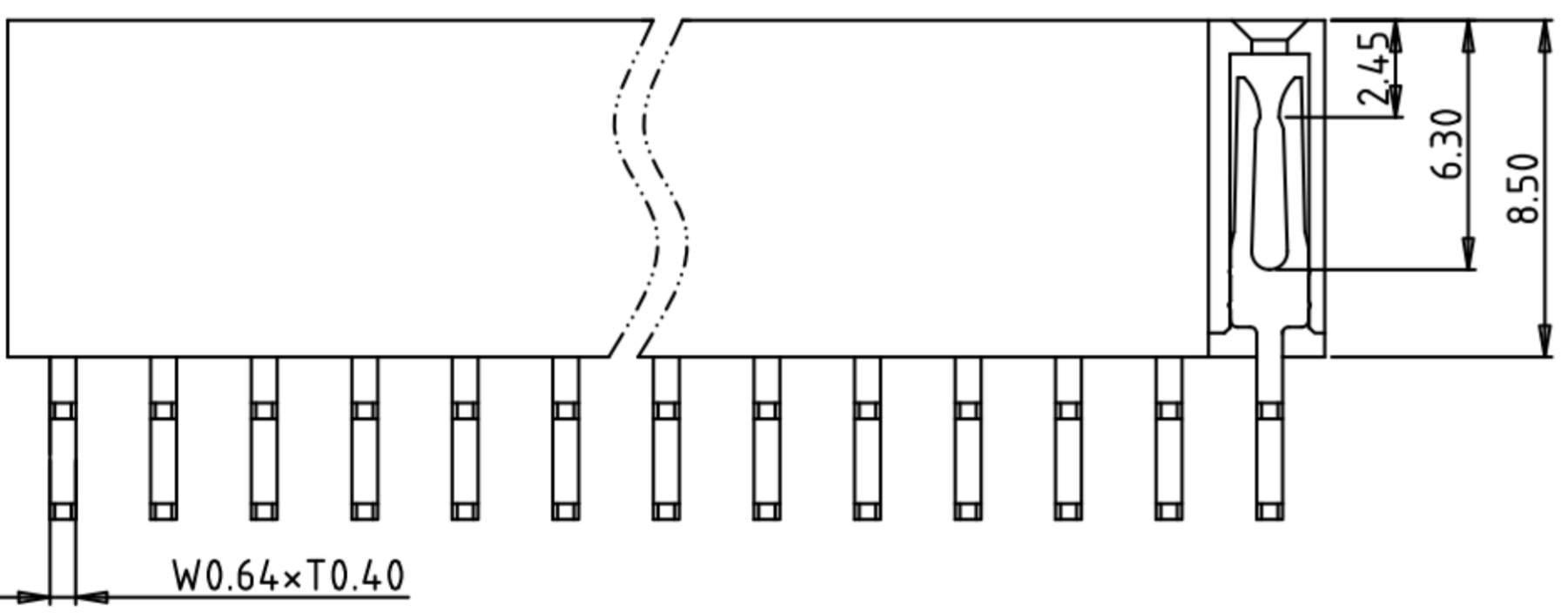


REVISION DATA				
SYM	REV	DESCRIPTION	DATE	APPR.
	00	new part	22.03.17	MR
	01	new order information	28.02.24	MH

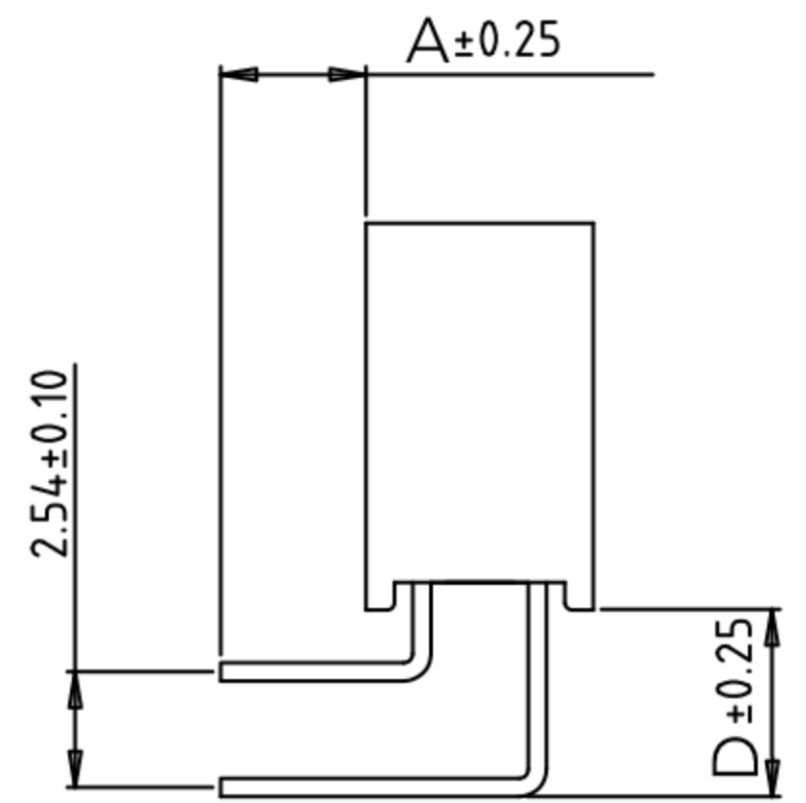
D



C



B



Electrical
 Current rating: 1,5Amps/contact max.
 Contact resistance: ≤ 20mΩ/contact
 Isolation resistance: ≥ 1000MΩ at V=100V
 Withstanding Voltage: 450V AC/minute

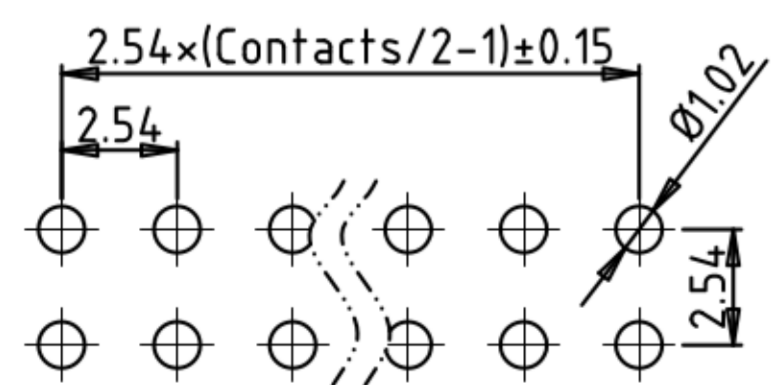
Material
 Contact: Phosphor Bronze
 Isolator: High Temperature, Thermoplastic UL94V-0

Operating temperature:
 Gold plated: -55°C to +105°C
 Tin plated: -40°C to +105°C

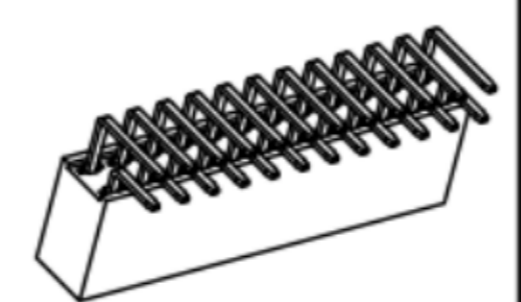
order information

B254124	XX	XX	XX	XX	XX
No. of Positions	Plating Option	Packaging	Dimension	Special Customer	
04~80	01= gold flash 140= sel.: 10µ" gold/flash gold xx= on request	B= tray C= tube D= tape&reel xx= on request	A/ D	xx= on request	

A



Recommended P.C.B Layout(±0.05)



		Dual Row Female Header Right Angle Type		
Tolerance:	PROJECTON			
X. ± 0.50	DATE	22.03.2017	Customer Drawing- No.:	
.X ± 0.30	DRAWN	MR	Drawing- No.: 2160882	
.XX ± 0.20	CHECKED	BR		
.XXX ± 0.05	APPROVED	BR		
X.° ± 2°			UNIT: mm	SCALE: SIZE: A4

4

3

2

1