

4

3

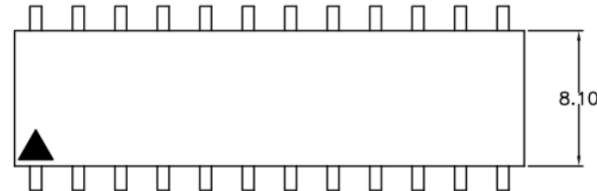
2

1

RoHS REACH compliant

REVISION DATA				
SYM	REV	DESCRIPTION	DATE	APPR.
	00	new part	22.03.17	MR

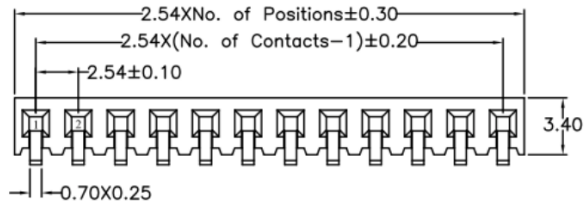
D



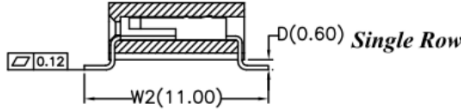
D

**Electrical**  
**Current rating:** 3Amps/contact max.  
**Contact resistance:** ≤ 20mΩ/contact  
**Isolation resistance:** ≥ 1000MΩ at V=100V  
**Withstanding Voltage:** 550V AC/minute

C



C



**Material**  
**Contact:** Phosphor Bronze  
**Isolator:** High Temperature, Thermoplastic UL94V-0  
**Operating temperature:** Gold plated: -55°C to +105°C  
 Tin plated: -40°C to +105°C

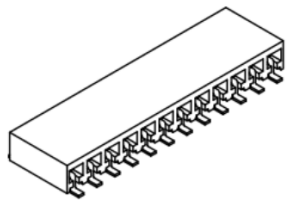
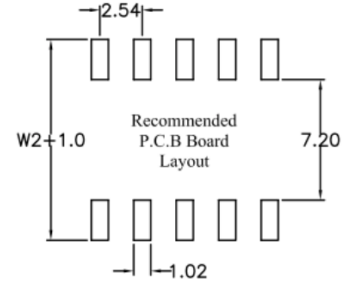
B

B

order information

B254159	-	xx	xx	xx	-	xx
No. of Positions		Plating Option	Packaging			Special Customer
02~40		01= gold flash	F= tape&reel with cap			
		xx= on request	E= tube&cap			
			xx= on request			

A



	<b>PROJECTON</b>		<b>Single Row Female Header Straight SMT Type</b>		
	<b>DATE</b>	22.03.2017	Customer Drawing-No.:		
	<b>DRAWN</b>	MR	Drawing-No.: 2160889		
	<b>CHECKED</b>	BR			
	<b>APPROVED</b>	BR	<b>UNIT:</b> mm	<b>SCALE:</b>	<b>SIZE:</b> A4

**Tolerance:**  
 X. ±0.50  
 .X ±0.35  
 .XX ±0.25  
 .XXX ±0.05  
 X\* ±2\*

4

3

2

1