

4

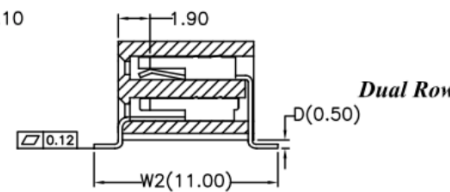
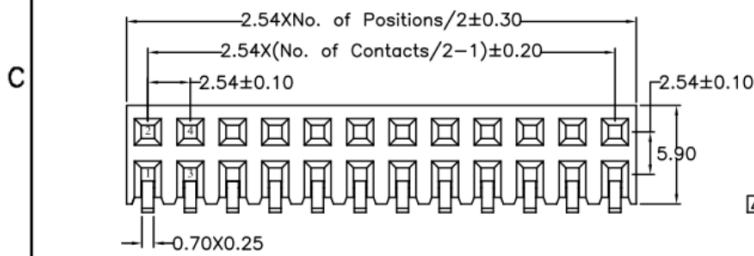
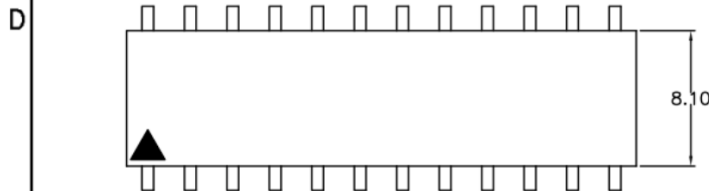
3

2

1

RoHS REACH compliant

REVISION DATA				
SYM	REV	DESCRIPTION	DATE	APPR.
	00	new part	22.03.17	MR



**Electrical**  
 Current rating: 3Amps/contact max.  
 Contact resistance: ≤ 20mΩ/contact  
 Isolation resistance: ≥ 1000MΩ at V=100V  
 Withstanding Voltage: 550V AC/minute

**Material**  
 Contact: Phosphor Bronze  
 Isolator: High Temperature, Thermoplastic UL94V-0

**Operating temperature:**  
 Gold plated: -55°C to +105°C  
 Tin plated: -40°C to +105°C

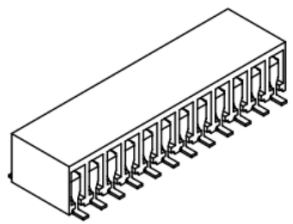
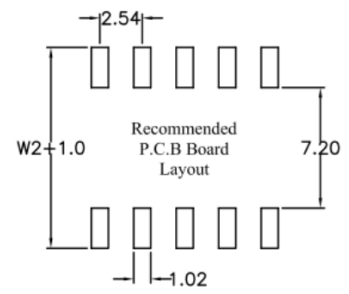
B

B

order information

B254162	xx	xx	xx	xx
No. of Positions	Plating Option	Packaging	Special Customer	
04~80	01= gold flash	F= tape&reel with cap		
	xx= on request	E= tube&cap		
		xx= on request		

A



	<b>BRCONNECTORS</b>		<b>Dual Row Female Header Straight SMT Type</b>		
	PROJECTON				
	DATE	22.03.2017	Customer Drawing-No.:		
	DRAWN	MR	Drawing-No.: 2160889		
	CHECKED	BR			
APPROVED	BR	UNIT:	SCALE:	SIZE:	A4

Diese Zeichnung ist ausdrücklich Eigentum der BR-connectors GmbH. Ohne vorherige Zustimmung seitens der BR-connectors GmbH darf diese nicht vervielfältigt, noch an Dritte zugänglich gemacht werden. Wir behalten uns alle Rechte vor, auch im Falle einer Patentierung nach Gebrauchsmusterprüfung.