

RoHS  
REACH  
compliant

REVISION DATA				
SYM	REV	DESCRIPTION	DATE	APPR.
	00	new part	23.05.18	MR
	01	new Order Informations	02.08.18	MR

**Technical Specifications**

Insulator: Black glass filled polyester PPS+GF30  
UL 94V-0

Sleeve: Brass CuZn39Pb3(C3604)

Contact Clip (6 finger): Beryllium copper (C1720)

Mating Pin Ø: 0.653 to 0.889mm

Forces: (polished steel gauge Ø0.66mm)

Insertion: 140g typ. Min.

Withdrawal: 25g typ. Min.

Sleeve retention force: 3.0 Kgf / contact min.

Rated Voltage: 40VRMS / 150VDC

Rated Current: 3 A

Contact Resistance: Max. 10mΩ

Insulation Resistance: 5000MΩ min. at 100AC

Dielectric Strength: Min. 1000VRMS

Capacitance: 1pF max.

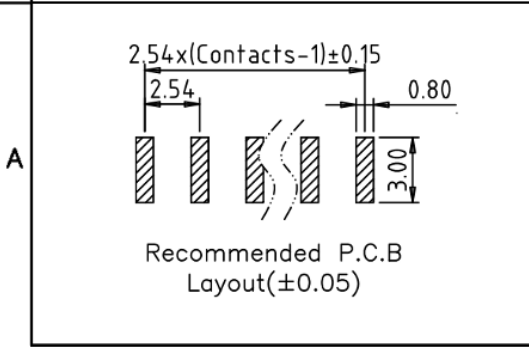
Mechanical Life: Min. 200 cycles

Temperature: -55°C to 105°C

Soldering Temperature: ±250°C / 5s

**order information**

BP254125	xx	xx	xx	xx	xx
No. of Positions	Plating Option	Clip Plating Option	Packaging	Special Customer	
01~40	100= tin xx= on request	01= gold flash xx= on request	F= tape&reel with cap H= tape&reel with film xx= on request		



		<b>Single Row Precision Female Header Right Angle SMT Type</b>		
		<b>Tolerance:</b> X. ±0.50 .X ±0.35 .XX ±0.25 .XXX ±0.05 X° ±2°	<b>PROJECTON</b>	<b>DATE</b> 23.05.2018
		<b>DRAWN</b> MR	<b>Drawing-No.:</b> 2161521	
		<b>CHECKED</b> BR		
		<b>APPROVED</b> BR	<b>UNIT:</b> mm	<b>SCALE:</b>
				<b>SIZE:</b> A4