

4

3

2

1



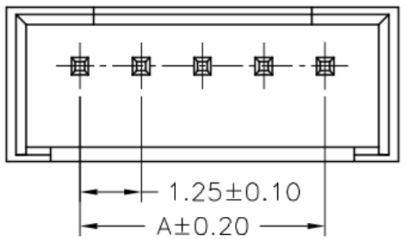
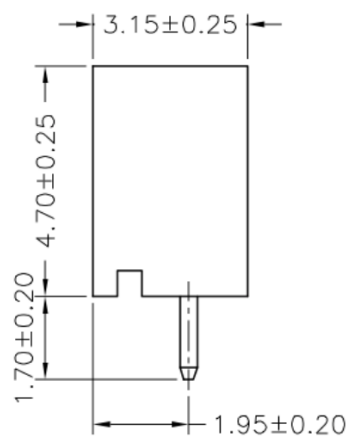
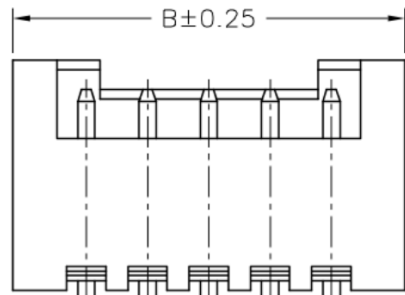
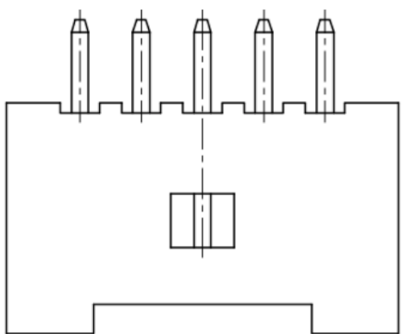
REVISION DATA				
SYM	REV	DESCRIPTION	DATE	APPR.
	00	new part	29.05.17	MR
	01	new order information	10.02.20	MH

**Technical Specification**

Current Rating: 1A AC, DC  
Voltage Rating: 200V AC, DC  
Temperature: -25°C to +85°C  
*high temperature:* -40°C to +105°C  
Contact Resistance: 20mΩ  
Insulation Resistance: 100MΩ  
Withstanding Voltage: 500V AC/minute  
Material Pin: Brass  
Material: Thermoplastic, UL94V-0

**Dimension:**

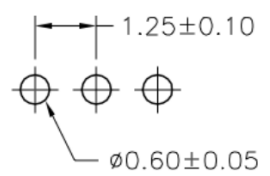
A = (No. of Pos. - 1) x 1.25  
B = A + 3.00



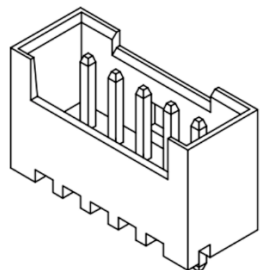
PIN 0.35 SQ  
Circuit 1

**order information**

<b>C125405</b>	<b>xx</b>	<b>xx</b>	<b>xx</b>	<b>xx</b>	<b>xx</b>	<b>xx</b>
<b>No. of Positions</b>	<b>Plating Option</b>	<b>Type</b>	<b>Entry</b>	<b>Packaging</b>	<b>Special Customer</b>	
02~15	100= tin xx= on request	A2= THT	B1= top	A= bag xx= on request	xx= on request	



P.C.B LAYOUT



	<b>Single Row Wafer THT Type, Top Entry</b>	
	<b>PROJECTON</b>	
	<b>DATE</b>	29.05.2017
	<b>DRAWN</b>	MR
<b>CHECKED</b>	BR	<b>Drawing-No.:</b> 2161128
<b>APPROVED</b>	BR	<b>UNIT:</b> mm <b>SCALE:</b> <b>SIZE:</b> A4