

4

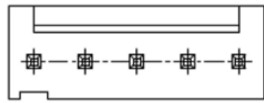
3

2

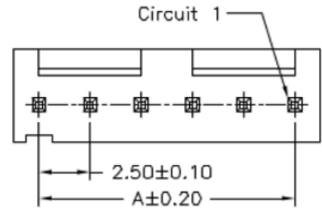
1

RoHS REACH compliant

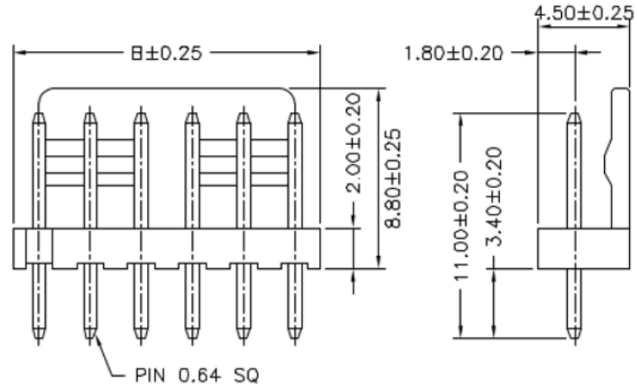
REVISION DATA				
SYM	REV	DESCRIPTION	DATE	APPR.
	00	new part	03.08.17	MR



02~05P



Circuit 1



B±0.25

1.80±0.20

4.50±0.25

2.00±0.20

8.80±0.25

11.00±0.20

3.40±0.20

PIN 0.64 SQ

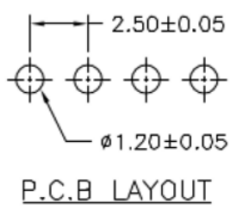
Technical Specification

Current Rating: 3A AC, DC
 Voltage Rating: 250V AC,DC
 Temperature: -25°C to +85°C
high temperature: -40°C to +105°C
 Contact Resistance: 10mΩ
 Insulation Resistance: 1000MΩ
 Withstanding Voltage: 800V AC/minute
 Material Pin: Brass
 Material: Thermoplastic, UL94V-0

Circuit No.	Dimensions	
	A	B
02P	2.50	5.00
03P	5.00	7.50
04P	7.50	10.00
05P	10.00	12.50
06P	12.50	15.00
07P	15.00	17.50
08P	17.50	20.00
09P	20.00	22.50
10P	22.50	25.00
11P	25.00	27.50
12P	27.50	30.00
13P	30.00	32.50
14P	32.50	35.00
15P	35.00	37.50
16P	37.50	40.00
17P	40.00	42.50
18P	42.50	45.00
19P	45.00	47.50
20P	47.50	50.00

order information

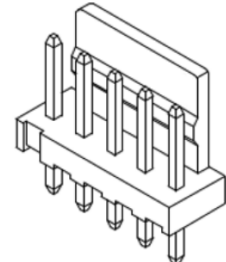
C250404	xx	xx	xx	xx	xx
No. of Positions	Plating Option	Entry	Packaging	Special Customer	
02~20	01= gold flash	B1= top	A= bag	xx= on request	
xx= on request	100= tin		xx= on request		
			xx= on request		



2.50±0.05

ø1.20±0.05

P.C.B LAYOUT



	BRCONNECTORS		Single Row Wafer THT Type, Top Entry			
	PROJECTON					
	DATE	03.08.2017	Customer Drawing-No.:			
	DRAWN	MR	Drawing-No.: 2161348			
	CHECKED	BR				
APPROVED	BR	UNIT:	SCALE:	SIZE:	A4	

Tolerance:
 .X ± 0.25
 .XX ± 0.15
 .XXX ± 0.05

D

D

C

C

B

B

A

4

3

2

1