

4

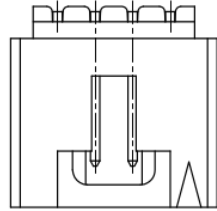
3

2

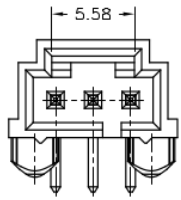
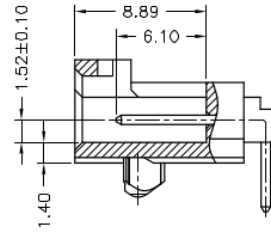
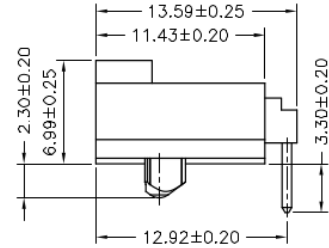
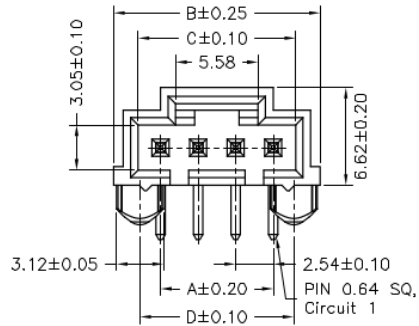
1

RoHS REACH compliant

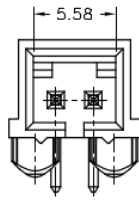
REVISION DATA				
SYM	REV	DESCRIPTION	DATE	APPR.
	00	new part	03.08.17	MR



(TOP VIEW)



03P



02P

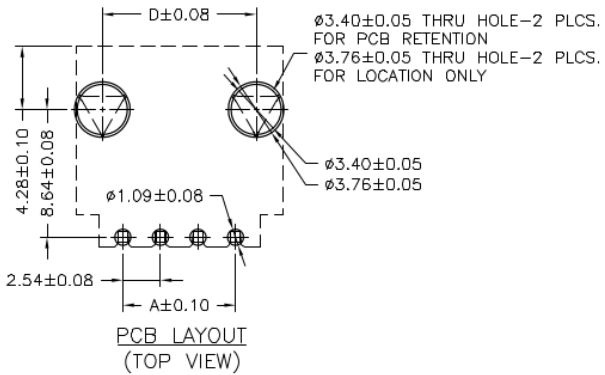
Technical Specification

Current Rating: 3A AC, DC
 Voltage Rating: 250V AC, DC
 Temperature: -25°C to +85°C
high temperature: -40°C to +105°C
 Contact Resistance: 20mΩ
 Insulation Resistance: 1000MΩ
 Withstanding Voltage: 1500V AC/minute
 Material Pin: Brass
 Material: Thermoplastic, UL94V-0

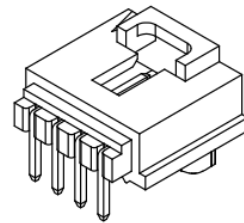
Circuit No.	Dimensions			
	A	B	C	D
02P	2.54	8.89	---	5.33
03P	5.08	11.43	8.12	7.87
04P	7.62	13.97	10.66	10.41
05P	10.16	16.51	13.20	12.95
06P	12.70	19.05	15.74	15.49
07P	15.24	21.59	18.28	18.03
08P	17.78	24.13	20.82	20.57
09P	20.32	26.67	23.36	23.11
10P	22.86	29.21	25.90	25.65
11P	25.40	31.75	28.44	28.19
12P	27.94	34.29	30.98	30.73

order information

C254401	xx	xx	xx	xx	xx	xx	xx
No. of Positions	Plating Option	Type	Entry	Peg	Packaging	Special Customer	
02~12	01= gold flash	A2= tht	B2= side	C2= with	A= bag	xx= on request	
xx= on request	100= tin					xx= on request	
	xx= on request						



PCB LAYOUT (TOP VIEW)



	PROJECTON		Single Row Wafer THT Type, Side Entry		
	DATE	03.08.2017	Customer Drawing-No.:		
	DRAWN	MR	Drawing-No.: 2161365		
	CHECKED	BR			
APPROVED	BR	UNIT:	SCALE:	SIZE:	A4
		mm			