

4

3

2

1

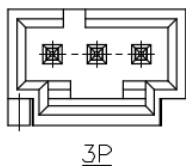
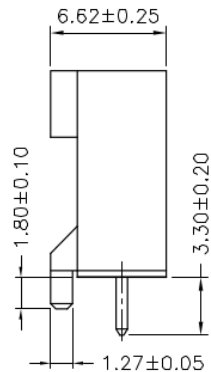
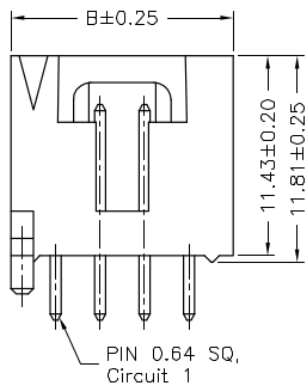
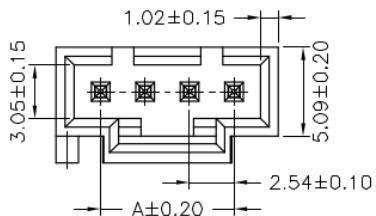
RoHS REACH compliant

REVISION DATA				
SYM	REV	DESCRIPTION	DATE	APPR.
	00	new part	03.08.17	MR

Technical Specification

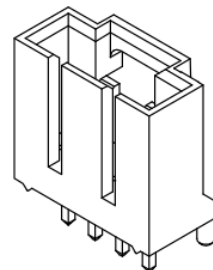
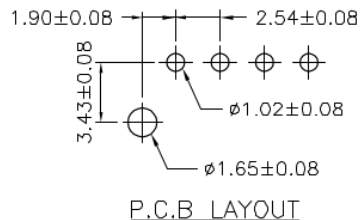
Current Rating: 3A AC, DC
Voltage Rating: 250V AC, DC
Temperature: -25°C to +85°C
high temperature: -40°C to +105°C
Contact Resistance: 20mΩ
Insulation Resistance: 1000MΩ
Withstanding Voltage: 1500V AC/minute
Material Pin: Brass
Material: Thermoplastic, UL94V-0

Circuit No.	Dimensions	
	A	B
03P	5.08	10.17
04P	7.62	12.71
05P	10.16	15.25
06P	12.70	17.79
07P	15.24	20.33
08P	17.78	22.87
09P	20.32	25.41
10P	22.86	27.95
11P	25.40	30.49
12P	27.94	33.03



order information

C254401	xx	xx	xx	xx	xx	xx	xx
No. of Positions	Plating Option	Type	Entry	Peg	Packaging	Special Customer	
02~12	01= gold flash	A2= tht	B1= top	C2= with	A= bag	xx= on request	
xx= on request	100= tin				xx= on request		
							xx= on request



Single Row Wafer
THT Type, Top Entry

Tolerance:
.X ± 0.25
.XX ± 0.15
.XXX ± 0.05

PROJECTON	
DATE	03.08.2017
DRAWN	MR
CHECKED	BR
APPROVED	BR

Customer Drawing-No.:
Drawing-No.: 2161368

UNIT: mm SCALE: SIZE: A4