

4

3

2

1

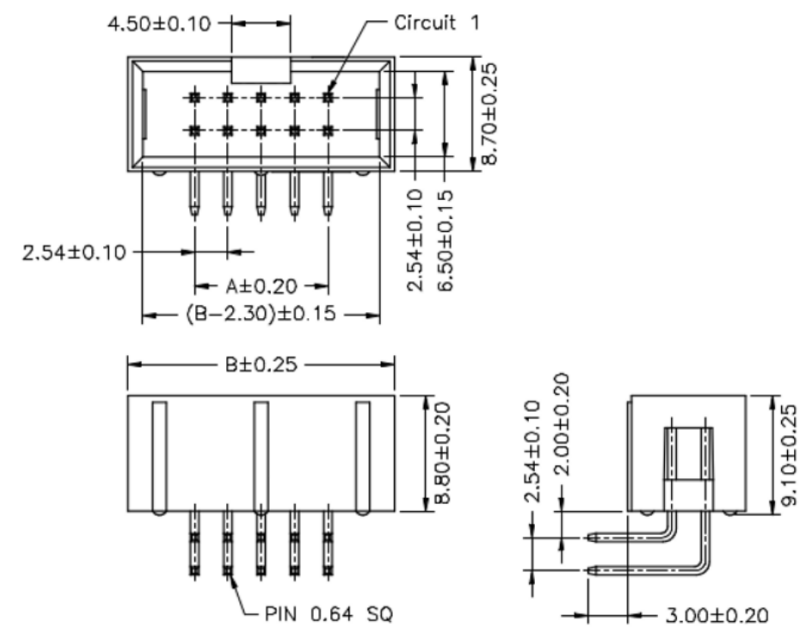


REVISION DATA				
SYM	REV	DESCRIPTION	DATE	APPR.
	00	new part	03.08.17	MR

Technical Specification

Current Rating: 3A AC, DC
Voltage Rating: 250V AC,DC
Temperature: -25°C to +85°C
high temperature: -40°C to +105°C
Contact Resistance: 20mΩ
Insulation Resistance: 1000MΩ
Withstanding Voltage: 1500V AC/minute
Material Pin: Brass
Material: Thermoplastic, UL94V-0

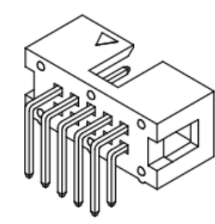
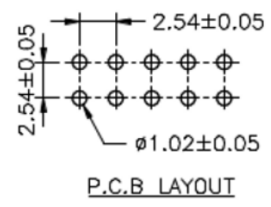
Circuit No.	Dimensions	
	A	B
2X03P	5.08	15.24
2X04P	7.62	17.78
2X05P	10.16	20.32
2X06P	12.70	22.86
2X07P	15.24	25.40
2X08P	17.78	27.94
2X10P	22.86	33.02
2X12P	27.94	38.10
2X13P	30.48	40.64
2X15P	35.56	45.72
2X17P	40.64	50.80
2X20P	48.26	58.42
2X22P	53.34	63.50
2X24P	58.42	68.58
2X25P	60.96	71.12
2X30P	73.66	83.82
2X32P	78.74	88.90



order information

C254404	xx	xx	xx	xx	xx
No. of Positions	Plating Option	Entry	Packaging	Special Customer	
06-64	01= gold flash	B2= side	A= bag	xx= on request	
xx= on request	100= tin	xx= on request			
xx= on request					

A



BRCONNECTORS

**Dual Row Wafer
THT Type, Side Entry**

<p>Tolerance: .X ± 0.25 .XX ± 0.15 .XXX ± 0.05</p>	PROJECTON				
	DATE	03.08.2017	Customer Drawing-No.:		
	DRAWN	MR	Drawing-No.: 2161380		
	CHECKED	BR			
APPROVED	BR	UNIT:	SCALE:	SIZE:	A4

4

3

2

1