

4

3

2

1

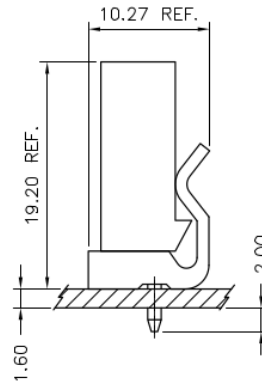
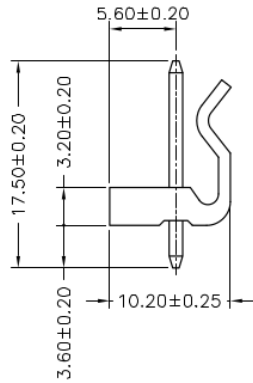
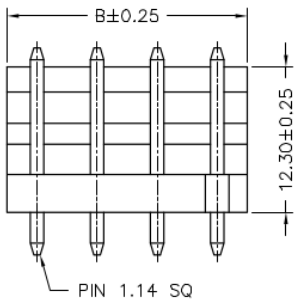
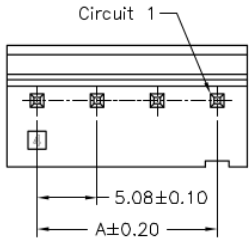
RoHS REACH compliant

REVISION DATA				
SYM	REV	DESCRIPTION	DATE	APPR.
	00	new part	03.08.17	MR

Technical Specification

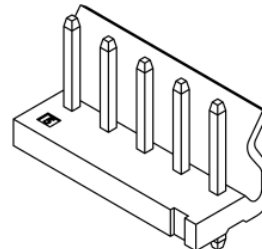
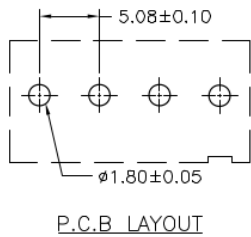
Current Rating: 7A AC, DC
 Voltage Rating: 250V AC, DC
 Temperature: -25°C to +85°C
high temperature: -40°C to +105°C
 Contact Resistance: 10mΩ
 Insulation Resistance: 1000MΩ
 Withstanding Voltage: 1500V AC/minute
 Material Pin: Brass
 Material: Thermoplastic, UL94V-0

Circuit No.	Dimensions	
	A	B
02P	5.08	10.16
03P	10.16	15.24
04P	15.24	20.32
05P	20.32	25.40
06P	25.40	30.48
07P	30.48	35.56
08P	35.56	40.64
09P	40.64	45.72



order information

C508402	xx	xx	xx	xx	xx
No. of Positions	Plating Option	Entry	Packaging	Special Customer	
02-09	01= gold flash	B1= top	A= bag	xx= on request	
xx= on request	100= tin	xx= on request			
xx= on request					



	PROJECTON		Single Row Wafer THT Type, Top Entry		
	DATE	03.08.2017	Customer Drawing-No.:		
	DRAWN	MR	Drawing-No.: 2161402		
	CHECKED	BR			
APPROVED	BR	UNIT: mm	SCALE:	SIZE: A4	