

RoHS  
REACH  
compliant

REVISION DATA				
SYM	REV	DESCRIPTION	DATE	APPR.
	00	new part	29.06.17	MR

**Technical Specification**

Current Rating: 3A AC, DC  
 Voltage Rating: 300V AC, DC  
 Temperature: -25°C to +85°C  
*high temperature: on request*  
 Contact Resistance: 20mΩ  
 Insulation Resistance: 100MΩ  
 Withstanding Voltage: 1000V AC/minute  
 Material: Thermoplastic, UL94V-0

Circuit No.	Dimensions		
	A	B	C
02P	2.00	5.60	4.60
03P	4.00	7.60	6.60
04P	6.00	9.60	8.60
05P	8.00	11.60	10.60
06P	10.00	13.60	12.60
07P	12.00	15.60	14.60
08P	14.00	17.60	16.60
09P	16.00	19.60	18.60
10P	18.00	21.60	20.60
11P	20.00	23.60	22.60
12P	22.00	25.60	24.60
13P	24.00	27.60	26.60
14P	26.00	29.60	28.60
15P	28.00	31.60	30.60

**order information**

D200411	xx	xx	xx
No. of Positions	Packaging	Special Customer	
02~15	A= bag	xx= on request	
xx= on request	xx= on request		

**BRCONNECTORS**

Single Row Housing  
Straight Type

<p><u>Tolerance:</u>          .X ± 0.25          .XX ± 0.15          .XXX ± 0.05</p>	PROJECTON				
	DATE	29.06.2017	Customer Drawing-No.:		
	DRAWN	MR	Drawing-No.: 2161321		
	CHECKED	BR			
	APPROVED	BR	UNIT:	SCALE:	SIZE:
		mm		A4	

Diese Zeichnung ist ausdrücklich Eigentum der BR-connectors GmbH. Ohne vorherige Zustimmung seitens der BR-connectors GmbH darf diese nicht vervielfältigt, noch an Dritte zugänglich gemacht werden. Wir behalten uns alle Rechte vor, auch im Falle einer Patentierung nach Gebrauchsmusterprüfung.

4

3

2

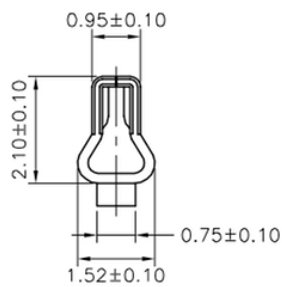
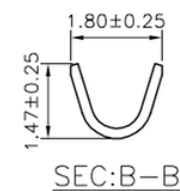
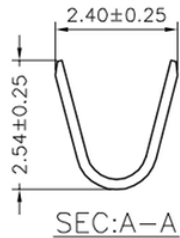
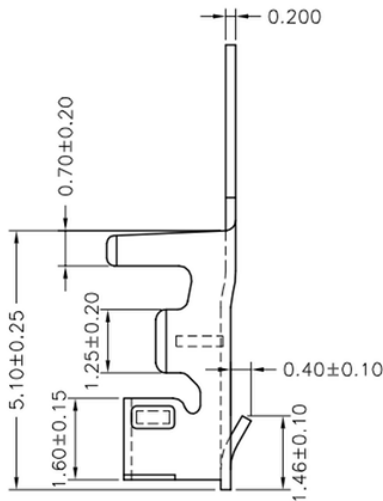
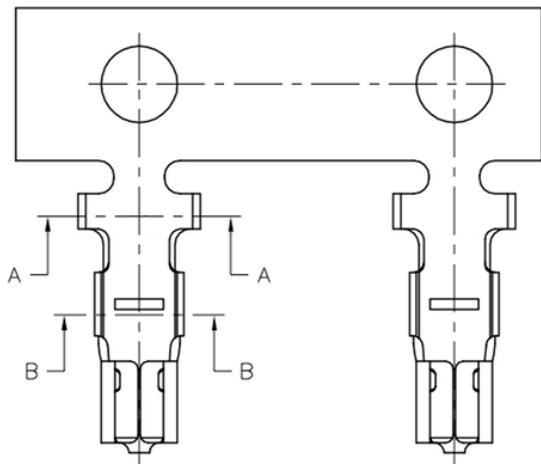
1

RoHS REACH compliant

REVISION DATA				
SYM	REV	DESCRIPTION	DATE	APPR.
	00	new part	29.06.17	MR

Technical Specification

Current Rating: 3A AC,DC  
 Voltage Rating: 300V AC,DC  
 Temperature: -25°C to +85°C  
*high temperature:* -40°C to +105°C  
 Contact Resistance: 20mΩ  
 Insulation Resistance: 100MΩ  
 Withstanding Voltage: 1000V AC/minute  
 Type: AWG #24 to #28 O.D.: 1.50mm (max)  
 Material: Phosphor Bronze



order information

E200411	xx	xx	xx
Plating Option	Packaging	Special Customer	
01= gold flash	D= tape&reel	xx= on request	
100= tin	xx= on request		
	xx= on request		



Terminal Crimp

<b>Tolerance:</b> .X ± 0.25 .XX ± 0.15 .XXX ± 0.05	PROJECTON				
	DATE	29.06.2017	Customer Drawing-No.:		
	DRAWN	MR	Drawing-No.: 2161320		
	CHECKED	BR			
	APPROVED	BR	UNIT:	SCALE:	SIZE: A4