

4

3

2

1

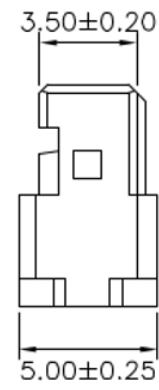
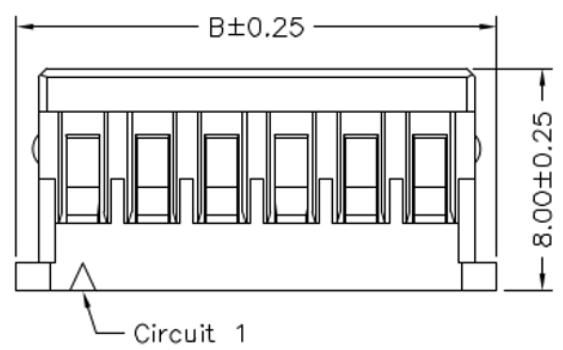
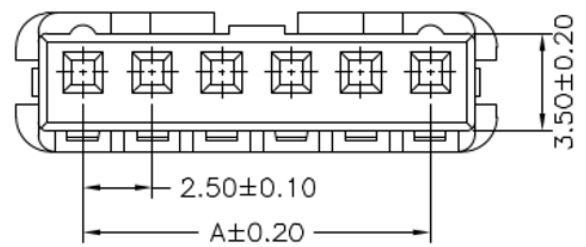
RoHS REACH compliant

REVISION DATA				
SYM	REV	DESCRIPTION	DATE	APPR.
	00	new part	03.08.17	MR

Technical Specification

Current Rating: 3A AC, DC
 Voltage Rating: 500V AC,DC
 Temperature: -25°C to +85°C
high temperature: on request
 Contact Resistance: 20mΩ
 Insulation Resistance: 500MΩ
 Withstanding Voltage: 1000V AC/minute
 Material: Thermoplastic, UL94V-0

Circuit No.	Dimensions		Circuit No.	Dimensions	
	A	B		A	B
02P	2.50	7.30	09P	16.50	24.80
03P	4.50	9.80	10P	18.50	27.30
04P	6.50	12.30	11P	20.50	29.80
05P	8.50	14.80	12P	22.50	32.30
06P	10.50	17.30	13P	24.50	34.80
07P	12.50	19.80	14P	26.50	37.30
08P	14.50	22.30	15P	28.50	39.80



order information

D250406	-	xx	-	xx	-	xx
No. of Positions		Packaging		Special Customer		
02~15		A= bag		xx= on request		
xx= on request		xx= on request				

	PROJECTON		Single Row Housing Straight Type		
	DATE	03.08.2017	Customer Drawing-No.:		
	DRAWN	MR	Drawing-No.: 2161354		
	CHECKED	BR			
	APPROVED	BR	UNIT: mm	SCALE:	SIZE: A4

A

D

C

B

D

C

B

4

3

2

1

4

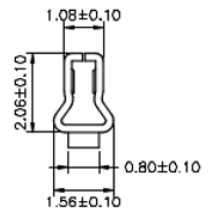
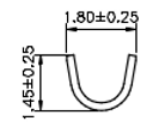
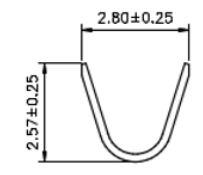
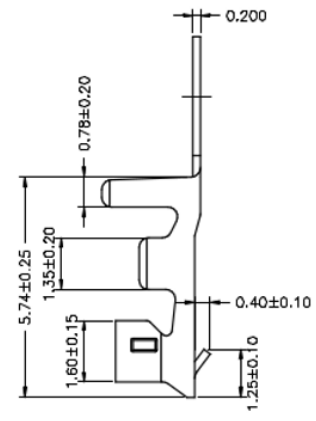
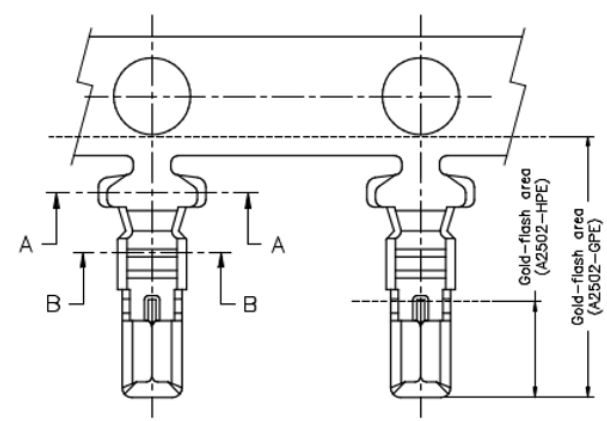
3

2

1



REVISION DATA				
SYM	REV	DESCRIPTION	DATE	APPR.
	00	new part	03.08.17	MR



Technical Specification

Current Rating: 3A AC,DC
 Voltage Rating: 500V AC,DC
 Temperature: -25°C to +85°C
high temperature: -40°C to +105°C
 Contact Resistance: 20mΩ
 Insulation Resistance: 500MΩ
 Withstanding Voltage: 1000V AC/minute
 Type: AWG #22 to #30, O.D.: 1.90mm (max)
 Material: Phosphor Bronze, Sn-plated

order information

E250406	xx	xx	xx
Plating Option	Packaging	Special Customer	
01= gold flash	D= tape&reel	xx= on request	
100= tin	xx= on request		
	xx= on request		

		Terminal Crimp		
Tolerance: .X ± 0.25 .XX ± 0.15 .XXX ± 0.05	PROJECTON			
	DATE	03.08.2017	Customer Drawing-No.:	
	DRAWN	MR	Drawing-No.: 2161353	
	CHECKED	BR		
	APPROVED	BR	UNIT:	SCALE: