

RoHS
REACH
compliant

REVISION DATA				
SYM	REV	DESCRIPTION	DATE	APPR.
	00	new part	21.03.18	AT

Technical Specifications

Material

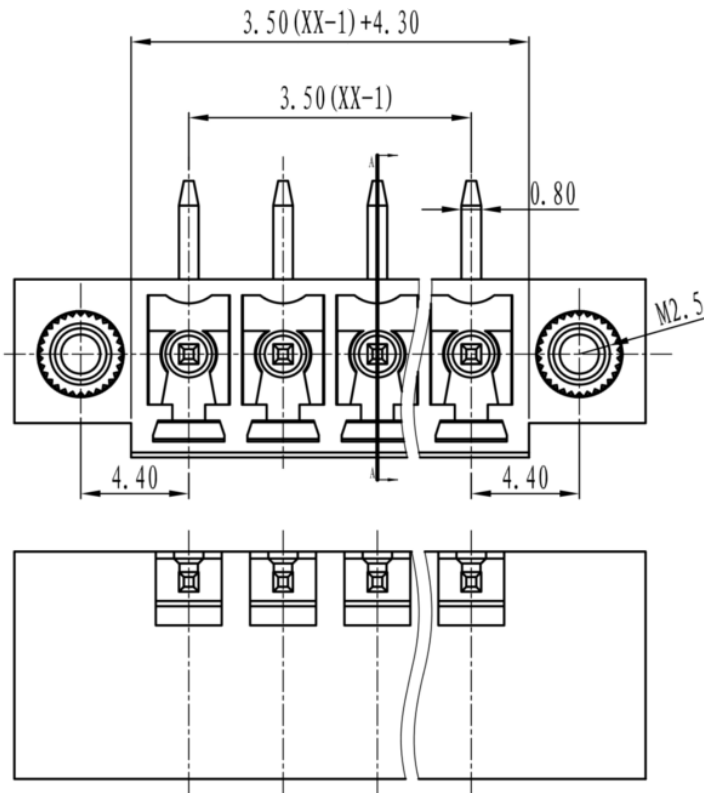
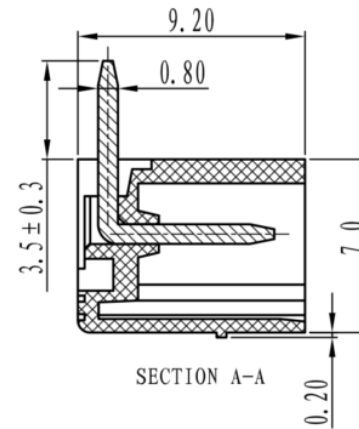
Pin header: Brass, Sn plated
Housing: PA66, UL94V-0
Nut: M2.5 Brass

Electrical

UL IEC
Rated voltage: 300V 250V
Rated current: 8A 10A
Contact resistance: 20mΩ
Insulation resistance: 500MΩ/DC500V
Withstanding voltage: AC2000V/1Min

Mechanical

Temp. Range: -40°C to +105°C
Max. soldering: +250°C/5 sec



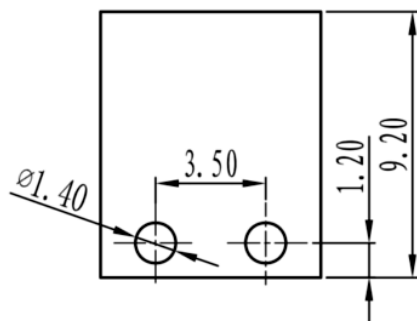
order information

P35036	-	XX	XX	XX	XX
No. of Positions		Colour	Packing	Special Customer	
02~24		10=Green	A= bag		
		xx= on request	BO= Box		
			xx= on request		



Box Pin Header

PROJECTON		Customer Drawing- No.:
DATE	21.03.2018	Drawing- No.: 2161826
DRAWN	AT	
CHECKED	MR	
APPROVED	BR	
		UNIT: mm SCALE: SIZE: A4



	linear dimension				fillet	chamfer	short angle sid								
variable range	to 6	over 6 to 30	over 30 to 120	over 120 to 480	to all	over 6 to 10	over 10 to 50	over 50 to 120	over 120 to all	to 5	over 5 to 30	over 30 to 120	over 120 to all		
tolerance	±0.1	±0.2	±0.3	±0.5	±0.9	±0.2	±0.5	±1	1°	30°	20°	10°	0.5	0.025	0.06